

October 2022



www.cornerstoneoftopeka.org



Cornerstone of Topeka, Inc.



FRIENDLY REMINDERS

Rent is due on the 1st of each month with a grace period until the 6th.

The office will be closed:

- Monday, Oct. 10th
- Thurs. & Fri. Nov. 24th & 25.
- Mon. & Tues. Dec. 26th & 27th.



If we receive your rent payment no later than 5:00 pm on the 6th of each month, you will automatically be entered to win a \$50 Walmart gift card. Pay on time for the entire year and you are entered to win a \$250 Walmart gift card. Good Luck!



July - Gloria
Aug.- Dorlin
Sept.- Evelyn

Chris Palmer
chris@corner1.org
Executive Director

Lisa Montgomery
lisa@corner1.org
Finance Manager

Dora A. Coronel
dora@corner1.org
Housing Director

Melissa M. Warrington
melissa@corner1.org
Executive Assistant

Jerry Yoder
jerry@corner1.org
Facilities Manager

Dale Jones
dale@corner1.org
Maintenance Technician



Breadbasket Farmer's Market
Westridge Mall
Until November 19th.

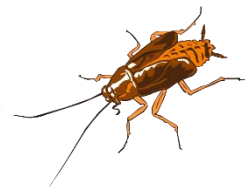


3rd Annual Ocktoberfest
528 SE Adams
Until October 23rd



We have seen an increase in the number of roaches taking up residency in our units. If you see a roach, even just one, please call the office to arrange for pest control to come treat. It is easier to eradicate a small number of roaches than a full infestation.

- Do not bring boxes from food pantries into unit.
- Do not leave food laying around.
- Take garbage out.
- Clean up crumbs and spills



It is a violation of federal law for a housing provider to refuse to rent or sell a home, to offer unequal terms, quote different prices, or apply different policies on the basis of race, color, religion, disability, or handicap, sex, familial status, or national origin. State law prohibits discrimination on the basis of marital status, ancestry, age, or familial status. Fair Housing Amendments Act of 1988 bars discrimination in the sale or rental of housing on the basis of a disability or because there are children in the family but, exempts housing for older persons.



OFFICE HOURS:

Monday - Friday 8-5

785-232-1650

1195 SW Buchanan, Ste. 102
Topeka, KS 66604